

VoIP Unified Communications

Connect 100 has been studied and created in order to be the only one in the market 100% dedicated to VoIP, not creating any dependencies on your local network and integrating with all existing voice equipment network in your company. Complemented by carefully selected and tested hardware, the Connect 100 ensures an optimal integration of voice and data. Each unit provides the necessary requirements of integration between the traditional telephony system (PSTN) and its equipment, the new requirements of VoIP services and equipment, and it is prepared to act as a simple gateway, allowing direct connection between the PBX (BRI/ PRI ISDN or Analogue) and fixed and mobile operator network.

Features:

- . Up to 200 extensions
- . Up to 100 concurrent calls
- . IVR Edition
- . Recording via browser
- . Call Monitoring
- . Ring by extension groups
- . Music on-hold
- . Call Rules & Routing
- . Voicemail to email inbox
- . Extensions directory
- . Audio conference
- . Complete call report



The Perfect Solution for Medium-Sized Enterprises

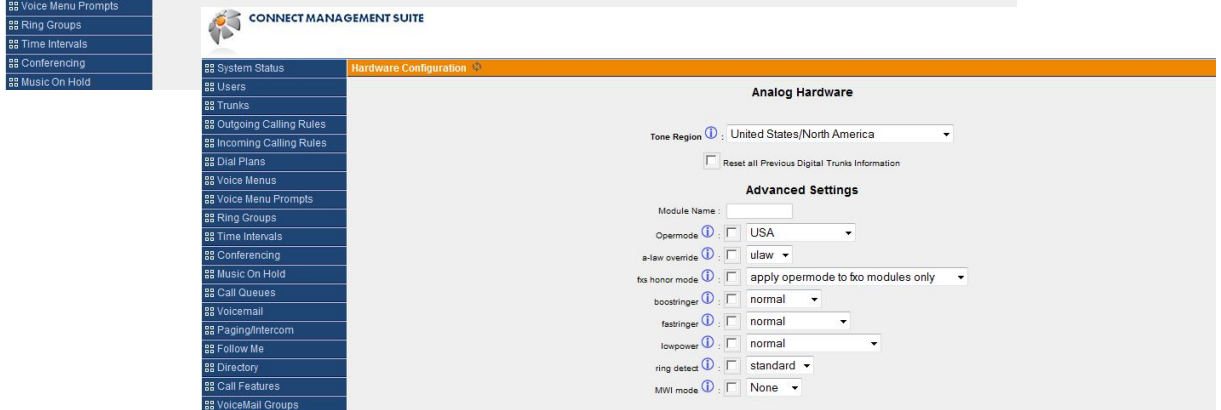
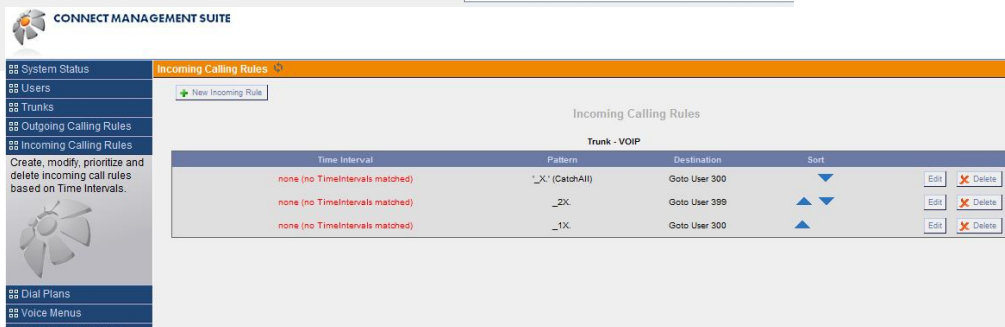
Designed exclusively for the medium sized enterprises, Connect 100 is a rack type solution (42,6H x 431W x 393,7D (mm)) presenting an outstanding performance in VoIP and PSTN communications. Apart from the Ethernet connection, coming already with the base unit, Connect 100 is prepared for BRI or PRI ports integration as an add-on. Without relying in any kind of license to use, Connect 100 handles up to 100 concurrent calls, and can register up to 200 extensions. All call rules can be managed through Connect Management Suite, a simple web based application. Security has not been forgotten, and therefore is prepared to back up call logs, settings and dial plan rules at any time. Connect 100 is indeed the best solution for companies that wish to start business and make the most of voice services with minimal investment.

Low Cost — High Performance VoIP PBX

The perfect solutions for medium sized companies

Connect Management Suite includes the following features:

- . System Status
- . Users
- . Trunks
- . Outgoing Calling Rules
- . Incoming Calling Rules
- . Dial Plans
- . Voice Menus
- . Voice Menu Prompts
- . Ring Groups
- . Time Intervals
- . Conferencing
- . Music On-Hold
- . Call Queues
- . Voicemail
- . Paging/Intercom
- . Follow Me
- . Directory
- . Call Features
- . Voicemail Groups
- . Options
- . PBX Logs
- . Configure Hardware
- . mISDN Config
- . System Info
- . Backup



Technical Specifications

Audio Concurrent Calls

- . Up to 100 concurrent calls
- . Available for IP/SS7/ISDN/GSM network*

Registrations

- . Up to 200 extensions

Audio Service (IVR)

- . IVR for virtual assistance
- . Voicemail with email notification
- . Audio Conference
- . IP Trunk

Audio Codecs

- . G.711, A-law, u-law
- . G.726
- . Speex
- . Dialogic
- . ILBC
- . G.723
- . G.729.a

Protocols

- . SIP
- . IAX

Features

- . Least Cost Routing (LCR)
- . Automatic Call Distribution (ACD)
- . Interactive Voice Recording (IVR)
- . Voicemail with Email Notification
- . IP Trunking
- . Call Transfer
- . Call Re-Route
- . Follow-me
- . Call Pickup
- . Call Parking
- . Conference Calls
- . Music for on-hold calls
- . Call Queuing Management
- . Fax 2Email and Mail2Fax
- . Complete Call Report
- and much more

Network

- . Dual Port Gigabit Ethernet

Chassis

- . 1U Rack type
- . Support for Static ReadyRails™ for 4-post and 2-post racks
- . Dimensions: 42,6H x 431W x 393,7D (mm)

Power

- . Redundant Power Supply (hot plug)
- . Single cabled power supply (250W)
- . 220v

Warranty

- . 1 Year

Hardware Add-on

- . PRI Gateway Module
- . BRI Gateway Module
- . GSM External Gateway

* Connect 100 can include BRI/PRI gateway module as an add-on, and external GSM gateway for PSTN and GSM connections. Included with base version: dual port Ethernet for IP connections.



Head Office

Edifício ICAT | Campus da FCUL, Campo Grande, 1749-016 Lisboa, Portugal
Email: info@zonadvanced.pt | Web: www.zonadvanced.pt